

New Features Connected Manufacturing

Release version 5.15

Table of contents

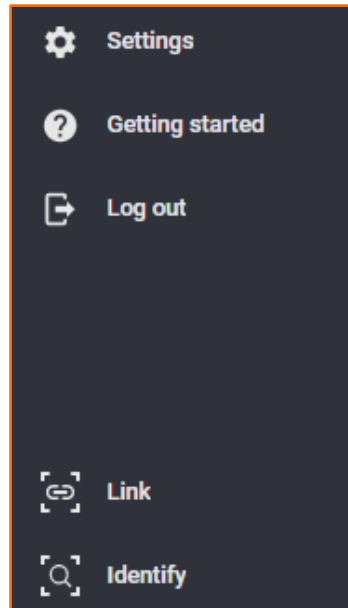
Introduction.....	2
Link and identify.....	2
Machine interface.....	2
Delete the folder structure after NC program download.....	2
File compression.....	2
CAM systems.....	3
CAM Import - Solid CAM.....	3
CAM Import - Mastercam.....	3
CAM Import – hyperMILL.....	4
Order Management.....	4
Improve the creation of machine operations.....	4
Material selection.....	5
Tool management.....	5
Tool Detail Page - Notes.....	5
Tool table.....	6
T No.....	6

Introduction

The update includes adjustments in the CAM tool data import area as well as improvements in order creation and tool handling.

Link and identify

For improved tablet usage, the two menu items "Link" and "Identify" have been fixed in the lower menu area.



Machine interface

Delete the folder structure after NC program download

Previously, only the folder directly above the NC program was deleted after the NC program download. You can now set up the folder level above the NC program up to which the folders are to be deleted. The prerequisite for deleting a folder is that it is empty, i.e. contains no other programs.

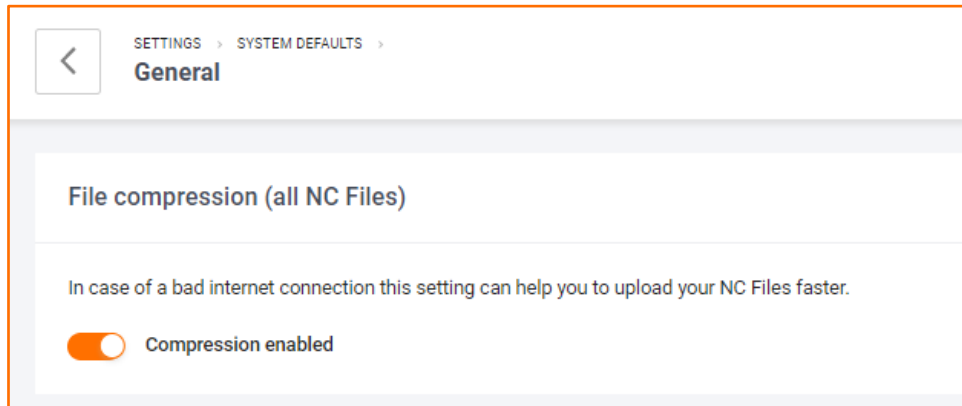
If you would like to make any adjustments here, please contact us. Our service technicians will carry out the necessary configuration adjustment quickly and easily.

File compression

If you are working with large NC files and have a slow internet connection, the transfer of Connected Manufacturing to and from the machine tool can be accelerated by file compression. The setting can be found under "Settings" → "System settings" → "General settings".

Please note that the upload or download speed of attachments from your computer to Connected Manufacturing is not affected.

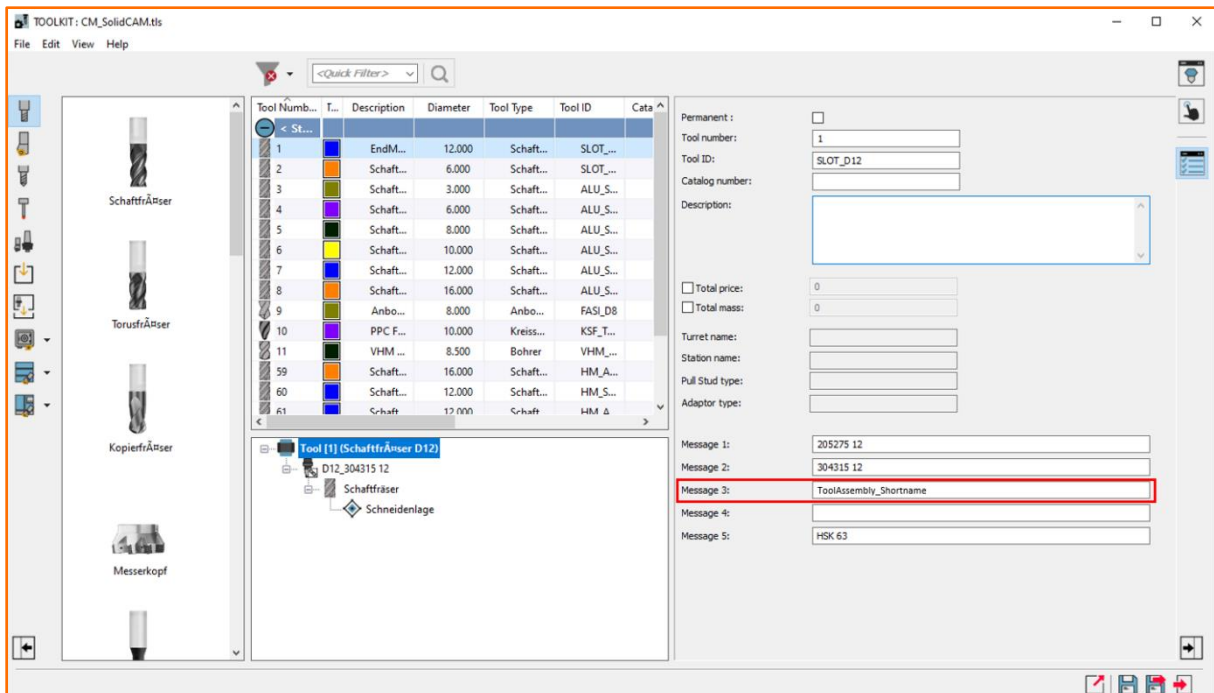
This function will be activated in the coming weeks by our service technicians.



CAM systems

CAM Import - Solid CAM

Support of the short name function (Comment 3).



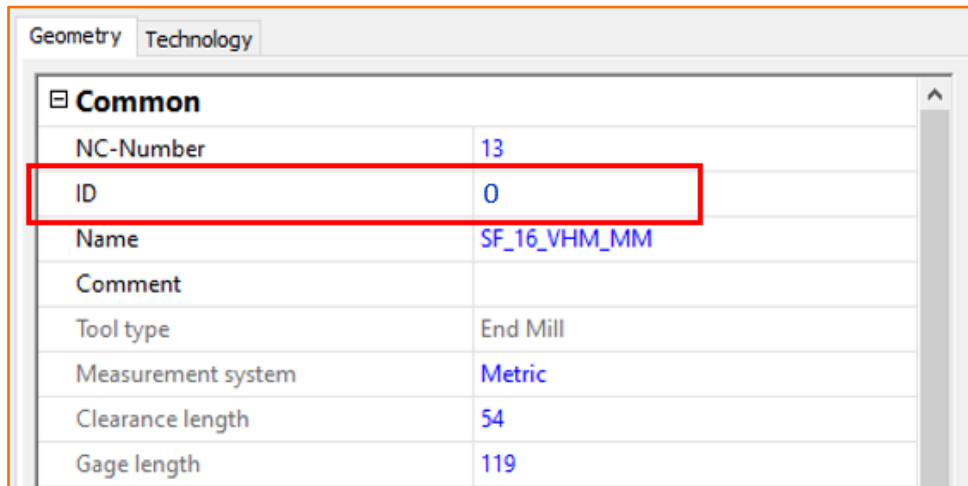
CAM Import - Mastercam

Improvement and extension of the supported tool types.

CAM Import – hyperMILL

The assignment of the “ID” of the complete tool has been changed:

- ID = "0": No T number is imported into Connected Manufacturing
- ID = "text": A short name “text” is imported into Connected Manufacturing

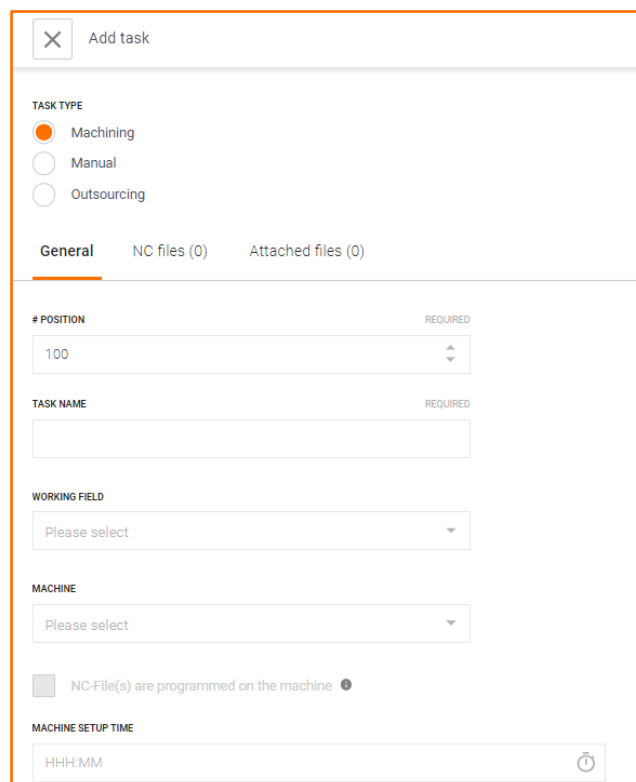


Common	
NC-Number	13
ID	0
Name	SF_16_VHM_MM
Comment	
Tool type	End Mill
Measurement system	Metric
Clearance length	54
Gage length	119

Order Management

Improve the creation of machine operations

The specification for the corresponding work area and machine is now located in the upper area in the side window, as well as manual and external work.



✕ Add task

TASK TYPE

Machining
 Manual
 Outsourcing

General NC files (0) Attached files (0)

POSITION REQUIRED
100

TASK NAME REQUIRED

WORKING FIELD
Please select

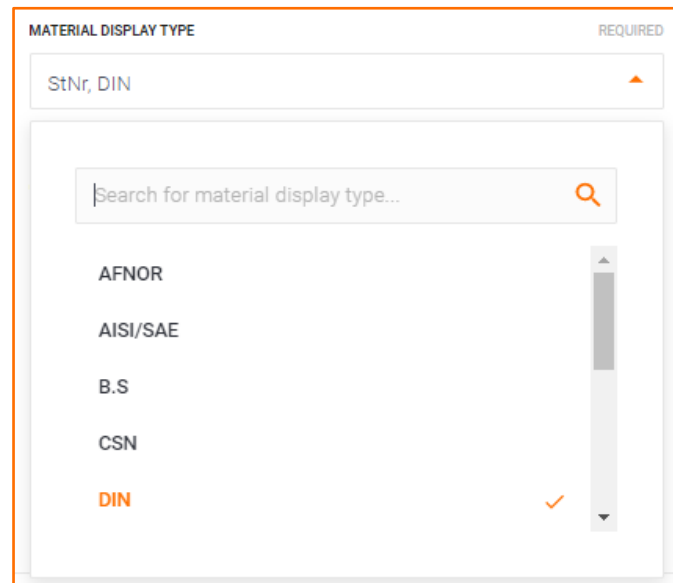
MACHINE
Please select

NC-File(s) are programmed on the machine

MACHINE SETUP TIME
HHH:MM

Material selection

The user can store the appropriate material for a component. Corresponding standards can be selected via "Settings" → "Tool management".

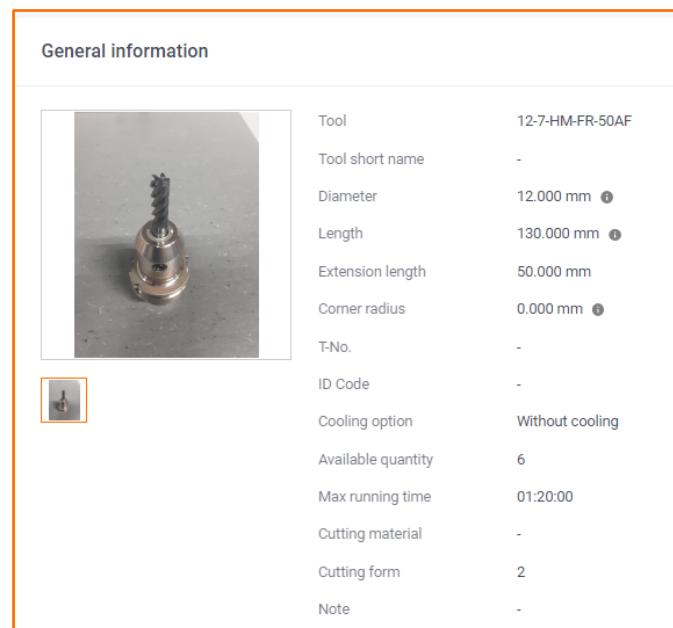


These are then available at the component system. An automatic change to another standard (e.g. steel number) is no longer performed.

Tool management

Tool Detail Page - Notes

On the tool detail page, the note field is no longer behind a drop-down menu.



Tool table

Column widths and designations (e.g. diameter symbol) have been improved in the tool overview.

T No.

The T-No. Column can now be hidden in the tool overview page.

Show/hide table columns

Select all columns that you want to display for **tool assembly types** in your **tool overview** or reset the table to the standard view. The order of the columns in the table corresponds to this listing:

STANDARD VIEW

- Name
- T-No.
- Cutting \varnothing
- Tool length
- Extension length
- Edge number
- Stock