

Garant

GARANT DIGITALE ANZEIGENEINHEIT

23 7601

GARANT Digital display unit /
GARANT unité d'affichage numérique /
GARANT unità di visualizzazione digitale /
GARANT unidad de visualización digital

BEDIENUNGSANLEITUNG

User manual | Manual de instrucciones |
Manuel d'utilisation | Manuale ad'uso |



**1 Handhabung / Handling /
Manutention / Manipolazione /
Manipulación**


- 1. ANSCHLIESSEN /
CONNECT /
RELIER /
COLLEGARE /
CONECTAR**



- 2. EINSCHALTEN /
SWITCH ON /
ALLUMER /
ACCENDERE /
ENCENDER**

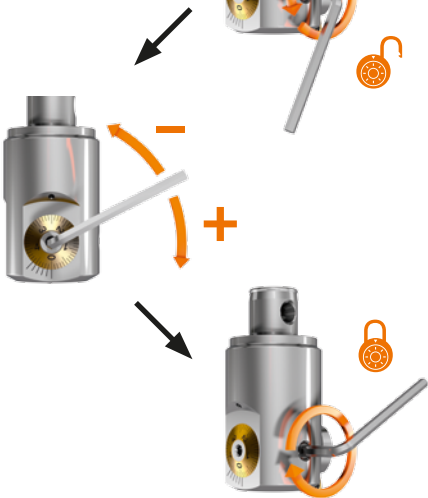
2



 (1 sec. drücken /
push / pousser /
premere / presionar)



3



4

TRENNEN /
DISCONNECT /
DÉCONNECTER /
DISCONNETTI /
DESCONECTAR

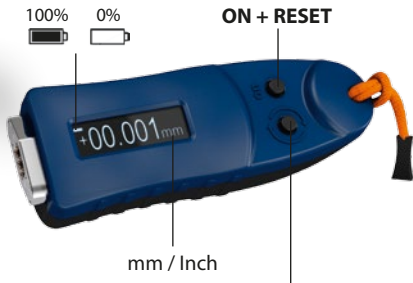


15 sec.

AUTOMATISCHE ABSCHALTUNG /
AUTO POWER OFF /
MISE HORS TENSION AUTOMATIQUE /
SPEGNIMENTO AUTOMATICO /
APAGADO AUTOMÁTICO

Garant

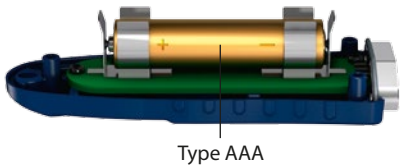
Funktion/ function/ fonction / funzione / función



**(1 sec. drücken / push / pousser /
premere / presionar)**

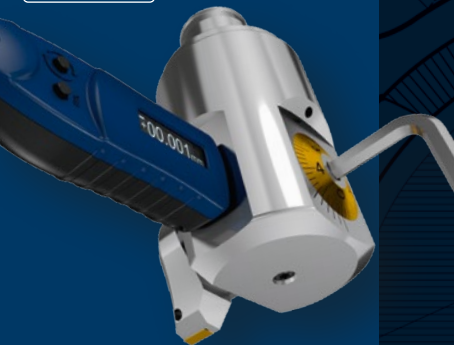
mm / inch

**(3 sec. drücken / push / pousser /
premere / presionar)**



B1

Garant



Hoffmann Supply Chain GmbH
Poststraße 15, 90471 Nuremberg, Germany
www.hoffmann-group.com

09041 -in Copyright © Hoffmann Group